



جامعة ستاردوم

مجلة ستاردوم العلمية للدراسات الطبيعية والهندسية



— مجلة ستاردوم العلمية للدراسات الطبيعية والهندسية —
تصدر بشكل نصف سنوي عن جامعة ستاردوم
المجلد الثاني | العدد الأول - لعام 2024م
رقم الإيداع الدولي : ISSN 2980-3756





**Peer Reviewing Committee of Stardom Scientific
Journal of Natural and Engineering Sciences**

Head Of Committee

Prof. Taha Elwi - Iraq

Manager Of Committee

Prof. Abbas Al-Azzawi - Iraq

Language Editor

Mrs. Laila Hussein Al-Eyan - Turkey

Member of Committee

Prof. Ali Saegh - Iraq

Eng. Saeed Ahmed - Philistine

Prof. Hayder H. Al-Khaylani - Iraq

Dr. Salem Saleh Barahmah - Yemen

Prof. Ali Abdulmajeed Ali Ahmed - Yemen

Prof. Mohammed Moqbil - Yemen

**All literary and artistic property rights are reserved to
Stardom Scientific Journal of Natural and Engineering Sciences**

- ▶ Unlocking the Cholesterol Content: A Comprehensive Analysis of Cholesterol Levels in Dairy Products, Fats, and Oils Through High-Performance Liquid Chromatography

Mokhtar S. S. Al - Salimi-Fares S. S. Al-Saidi - Adel A. M. Saeed

- ▶ Bilateral Generating Functions for the Two-Parameter, Three-variable Srivastava polynomials

Dr. Salem Saleh Barahmah

- ▶ A new extended beta function involving generalized mittag-leffler function and it's Applications

Dr. Salem Saleh Barahmah

◀ تربية و زراعة بعض أنواع النحل البري الملقح لطيف واسع من النباتات

أ.د. عبدالسلام محمد - Prof:Abdoalsalam mohamed gaool Al-Hjry

◀ مقال بحثي في كيمياء تحليل البيئة

دراسة بعض الصفات الفيزيوكيميائية والملوثات غير العضوية للمياه العادمة الناتجة من مدبغة لودر للبيئة المجاورة

جمال أحمد عبدالله الذهلي - علي ناصر أحمد الكوم - عادل أحمد محمد سعيد

- ▶ Flora Abyan governorate

Abdul-Nasser Al-Gefr1i

- ▶ Investigation of the Absorbing the Crash Impact of Car Accedient Due Tube Inversion

Eng. Abdulhakim Hamood Ahmed Abdulwahid-Dr. Fawaz Ahmed Ghaleb

Noman-Eng. Nezar Nasser Ali Haithm

- ▶ Investigation of the inside temperature to arrive comfortable condition1: case study Mechanical workshop building

Dr. Fawaz Ahmed Ghaleb Noman

- ▶ FIELD BALANCING FOR SINGLE BLADE FAN

Eng. Saleel Saeed Abdo - Prof. Dr. Ahmed Saleh Alhunaishi

Stardom Scientific Journal of Natural and Engineering Sciences

Introduction

Aims and Scope:

The stardom Scientific Journal of Natural and Engineering sciences is a journal for the publication of peer reviewed, original research for all aspects of Natural Sciences and Engineering Sciences.

This journal provides a forum for the discussion of Natural and Engineering sciences problems around the world and for the presentation of results. It is aimed only at the Natural and Engineering sciences.

Research Areas Include, but are not exclusive to:

- Biology and biomedical engineering
- Environmental Sciences
- Chemistry studies and Chemical Engineering
- Physics studies
- Material Studies
- Mathematics
- Computer Sciences and engineering
- Civil Engineering
- Area Engineering
- Environmental Engineering
- Telecommunications Engineering and networking

- Computer Engineering
- Electrical Engineering
- Agriculture Engineering
- Human-machine systems
- Space exploration
- Renewable energy
- Power systems and control
- Artificial intelligence and its applications
- Theoretical studies

Papers submitted should address Stardom Scientific Journal of Natural and Engineering sciences issues using a range of techniques e.g. case studies, observational and theoretical analyses, the application of science, engineering and technology to questions of environmental concern or mathematical and computer modeling techniques with the aim of informing both the researcher and practitioner.

Before you Begin

Conflict of interest

All authors are requested to disclose any actual or potential conflict of interest including any financial, personal or other relationships with other people or organizations within three years of beginning the submitted work that could inappropriately influence, or be perceived to influence, their work.

Submission declaration and verification

Submission of an article implies that the work described has not been published previously (except in the form of an abstract or as part of a published lecture or academic thesis or as an electronic preprint, that it is not under consideration for publication elsewhere, that its publication is approved by all authors and tacitly or explicitly by the responsible authorities where the work was carried out, and that, if accepted, it will not be published elsewhere in the same form, in English or in any other language, including electronically without the written consent of the copyright-holder.

Changes to authorship

This policy concerns the addition, deletion, or rearrangement of author names in the authorship of accepted manuscripts:

Before the accepted manuscript is published in an online issue: Requests to add or remove an author, or to rearrange the author names, must be sent to the Journal Manager from the corresponding author of the accepted manuscript and must include: (a) the reason the name should be added or removed, or the author names rearranged and (b) written confirmation (e-mail, fax, letter) from all authors that they agree with the addition, removal or rearrangement. In the case of addition or removal of authors, this includes confirmation from the author being added or removed. Requests that are not sent by the corresponding author will be forwarded by the Journal Manager to the corresponding author, who must follow the procedure as described above. Note that: (1) Journal Managers will inform the Journal Editors of any such requests and (2) publication of the accepted manuscript in an online issue is suspended until authorship has been agreed.

After the accepted manuscript is published in an online issue: Any requests to add, delete, or rearrange author names in an article published in an online issue will follow the same policies as noted above and result in a corrigendum..

Role of the funding source

You are requested to identify who provided financial support for the conduct of the research and/or preparation of the article and to briefly describe the role of the sponsor(s), if any, in study design; in the collection, analysis and interpretation of data; in the writing of the report; and in the decision to submit the article for publication. If the funding source(s) had no such involvement then this should be stated.

Language

Please write your text in good English (American or British usage is accepted, but not a mixture of these). Authors who feel their English language manuscript may require editing to eliminate possible grammatical or spelling errors and to conform to correct scientific English may wish to use the English Language Editing, as well as Arabic Language is accepted.

Submission

Submission to this journal proceeds totally online and you will be guided stepwise through the creation and uploading of your files. The system automatically converts source files to a single PDF file of the article, which is used in the peer-review process. Please note that even though manuscript source files are converted to PDF files at submission for the review process, these source files are needed for further processing after acceptance.

Referees

Please submit, with the manuscript, the names and addresses of at least three potential referees.

Preparation

Use of word-processing software

It is important that the file be saved in the native format of the word processor used. The text should be in single-column format. Keep the layout of the text as simple as possible. Most formatting codes will be removed and replaced on processing the article. In particular, do not use the word processor's options to justify text or to hyphenate words. However, do use bold face, italics, subscripts, superscripts etc. When preparing tables, if you are using a table grid, use only one grid for each individual table and not a grid for each row. If no grid is used, use tabs, not spaces, to align columns. The electronic text should be prepared in a way very similar to that of conventional manuscripts.

Note that source files of figures, tables and text graphics will be required whether or not you embed your figures in the text.

To avoid unnecessary errors, you are strongly advised to use the 'spell-check' and 'grammar-check' functions of your word processor.

Please **do not** add line numbering to the text document.

Article structure

Subdivision - numbered sections

Divide your article into clearly defined and numbered sections. Subsections should be numbered 1.1 (then 1.1.1, 1.1.2, ...), 1.2, etc. (the abstract is not included in section numbering). Use this numbering also for internal cross-referencing: do not just refer to 'the text'. Any subsection may be given a brief heading. Each heading should appear on its own separate line.

Introduction

State the objectives of the work and provide an adequate background, avoiding a detailed literature survey or a summary of the results.

Material and methods

Provide sufficient detail to allow the work to be reproduced. Methods already published should be indicated by a reference: only relevant modifications should be described.

Results

Results should be clear and concise.

Discussion

This should explore the significance of the results of the work, not repeat them. A combined Results and Discussion section is often appropriate. Avoid extensive citations and discussion of published literature.

Conclusions

The main conclusions of the study must be presented in a short Conclusions section, which may stand alone or form a subsection of a Discussion or Results and Discussion section.

Essential title page information

- **Title.** Concise and informative. Titles are often used in information-retrieval systems. Avoid abbreviations and formulae where possible.
- **Author names and affiliations.** Where the family name may be ambiguous (e.g., a double name), please indicate this clearly. Present the authors' affiliation addresses (where the actual work was done) below the names. Indicate all affiliations with a lower-case superscript letter immediately after the author's name and in front of the appropriate address. Provide the full postal address of each affiliation, including the country name and, if available, the e-mail address of each author.
- **Corresponding author.** Clearly indicate who will handle correspondence at all stages of refereeing and publication, also post-publication. **Ensure that phone numbers (with country and area code) are provided in addition to the e-mail address and the complete postal address. Contact details must be kept up to date by the corresponding author.**
- **Present/permanent address.** If an author has moved since the work described in the article was done, or was visiting at the time, a 'Present address' (or 'Permanent address') may be indicated as a footnote to that author's name. The address at which the author actually did the work must be retained as the main, affiliation address. Superscript Arabic numerals are used for such footnotes.

Abstract

A concise and factual abstract is required. The abstract should state briefly the purpose of the research, the principal results and major conclusions. An abstract is often presented separately from the article, so it must be able to stand alone. For this reason, References should be avoided, but if essential, then cite the author(s) and year(s). Also, non-standard or uncommon abbreviations should be avoided, but if essential they must be defined at their first mention in the abstract itself. Not more 250 words.

Graphical abstract

A Graphical abstract is optional and should summarize the contents of the article in a concise, pictorial form designed to capture the attention of a wide readership online. Authors must provide images that clearly represent the work described in the article. Graphical abstracts should be submitted as a separate file in the online submission system. Image size: Please provide an image with a minimum of 531×1328 pixels (h \times w) or proportionally more. The image should be readable at a size of 5×13 cm using a regular screen resolution of 96 dpi. Preferred file types: TIFF, EPS, PDF or MS Office files.

Highlights

High lights are mandatory for this journal. They consist of a short collection of bullet points that convey the core findings of the article and should be submitted in a separate file in the online submission system. Please use 'Highlights' in the file name and include 3 to 5 bullet points (maximum 85 characters, including spaces, per bullet point).

Keywords

Immediately after the abstract, provide a maximum of 6 keywords, using American spelling and avoiding general and plural terms and multiple concepts (avoid, for example, 'and', 'of'). Be sparing with abbreviations: only abbreviations firmly established in the field may be eligible. These keywords will be used for indexing purposes.

Acknowledgements

Collate acknowledgements in a separate section at the end of the article before the references and do not, therefore, include them on the title page, as a footnote to the title or otherwise. List here those individuals who provided help during the research (e.g., providing language help, writing assistance or proof reading the article, etc.).

Math formulae

Present simple formulae in the line of normal text where possible and use the solidus (/) instead of a horizontal line for small fractional terms, e.g., X/Y. In principle, variables are to be presented in italics. Powers of e are often more conveniently denoted by exp. Number consecutively any equations that have to be displayed separately from the text (if referred to explicitly in the text).

Footnotes

Footnotes should be used sparingly. Number them consecutively throughout the article, using superscript Arabic numbers. Many word processors build footnotes into the text, and this feature may be used. Should this not be the case, indicate the position of footnotes in the text and present the footnotes themselves separately at

the end of the article. Do not include footnotes in the Referencelist.
Table footnotes

Indicate each footnote in a table with a superscript lowercase letter.

Artwork

Electronic artwork

General points

- Make sure you use uniform lettering and sizing of your original artwork.
- Save text in illustrations as 'graphics' or enclose the font.
- Only use the following fonts in your illustrations: Arial, Courier, Times, Symbol.
- Number the illustrations according to their sequence in the text.
- Use a logical naming convention for your artwork files.
- Provide captions to illustrations separately.
- Produce images near to the desired size of the printed version.
- Submit each figure as a separate file.

Formats

Regardless of the application used, when your electronic artwork is finalized, please 'save as' or convert the images to one of the following formats (note the resolution requirements for line drawings, halftones, and line/halftone combinations given below):

EPS: Vector drawings. Embed the font or save the text as 'graphics'.

TIFF: Color or grayscale photographs (halftones): always use a minimum of 300 dpi.

TIFF: Bitmapped line drawings: use a minimum of 1000 dpi.

TIFF: Combinations bitmapped line/half-tone (color or grayscale): a minimum of 500 dpi is required.

If your electronic artwork is created in a Microsoft Office application (Word, PowerPoint, Excel) then please supply 'as is'.

Please do not:

- Supply files that are optimized for screen use (e.g., GIF, BMP, PICT, WPG); the resolution is too low;
- Supply files that are too low in resolution;
- Submit graphics that are disproportionately large for the content.

Color artwork

Please make sure that artwork files are in an acceptable format (TIFF, EPS or MS Office files) and with the correct resolution. If, together with your accepted. Please note: Because of technical complications which can arise by converting color figures to 'gray scale' (for the printed version should you not opt for color in print) please submit in addition usable black and white versions of all the color illustrations.

Figure captions

Ensure that each illustration has a caption. Supply captions separately, not attached to the figure. A caption should comprise a brief title (**not** on the figure itself) and a description of the illustration. Keep text in the illustrations themselves to a minimum but explain all symbols and abbreviations used.

Tables

Number tables consecutively in accordance with their appearance in the text. Place footnotes to tables below the table body and indicate them with superscript lowercase letters. Avoid vertical rules. Be sparing in the use of tables and ensure that the data presented in tables do not duplicate results described elsewhere in the article.

References

Citation in text

Please ensure that every reference cited in the text is also present in the reference list (and vice versa). Any references cited in the abstract must be given in full. Unpublished results and personal communications are not recommended in the reference list, but may be mentioned in the text. If these references are included in the reference list they should follow the standard reference style of the journal and should include a substitution of the publication date with either 'Unpublished results' or 'Personal communication'. Citation of a reference as 'in press' implies that the item has been accepted for publication.

Web references

As a minimum, the full URL should be given and the date when the reference was last accessed. Any further information, if known (DOI, author names, dates, reference to a source publication, etc.), should also be given. Web references can be listed separately (e.g., after the reference list) under a different heading if desired, or can be included in the reference list.

References in a special issue

Please ensure that the words 'this issue' are added to any references in the list (and any citations in the text) to other articles in the same Special Issue.

Reference style

Text: Indicate references by number(s) in square brackets in line with the text. The actual authors can be referred to, but the reference number(s) must always be given. Example: '..... as demonstrated [3,6]. Barnaby and Jones [8] obtained a different result'

List: Number the references (numbers in square brackets) in the list in the order in which they appear in the text.

Examples:

Reference to a journal publication:

[1] J. van der Geer, J.A.J. Hanraads, R.A. Lupton, The art of writing a scientific article, *J. Sci. Commun.* 163 (2010) 51–59.

Reference to a book:

[2] W. Strunk Jr., E.B. White, *The Elements of Style*, fourth ed., Longman, New York, 2000.

Reference to a chapter in an edited book:

[3] G.R. Mettam, L.B. Adams, How to prepare an electronic version of your article, in: B.S. Jones, R.Z. Smith (Eds.), *Introduction to the Electronic Age*, E-Publishing Inc., New York, 2009, pp. 281–304.

Submission checklist

The following list will be useful during the final checking of an article prior to sending it to the journal for review. Please consult this Guide for Authors for further details of any item.

Ensure that the following items are present:

One author has been designated as the corresponding author with contact details:

- E-mail address
- Full postal address
- Phone numbers

All necessary files have been uploaded, and contain:

- Keywords
- All figure captions

- All tables (including title, description, footnotes)

Further considerations

- Manuscript has been 'spell-checked' and 'grammar-checked'
- References are in the correct format for this journal
- All references mentioned in the Reference list are cited in the text, and vice versa
- Permission has been obtained for use of copyrighted material from other sources

INVESTIGATION OF THE INSIDE TEMPERATURE TO ARRIVE COMFORTABLE CONDITION: CASE STUDY MECHANICAL WORKSHOP BUILDING

Dr. Fawaz Ahmed Ghaleb Noman

Department of Mechatronics and Industrial Engineering
Faculty of Engineering - University of Aden - Yemen

Email: fawazag75@gmail.com

Abstract

Mechanical workshops are considered as important buildings in faculty of engineering. It is a place for the students and teachers to get practical experiences and activities. Thermal comfort is an essential requirement in most occupied spaces because it affects the productivity, health and thermal satisfaction of the occupants. Natural ventilation, which may provide occupants with good indoor thermal comfort, and reduce energy costs, has become an important sustainable strategy in building designs. Most of the mechanical workshop buildings in countries with a hot and humid climate use a combination of natural ventilation and electrical fans are commonly used as a space cooling method to provide thermal comfort to the occupants. This article presents the results of a field measurement study that was conducted on the mechanical workshop building which is located in Faculty of Engineering, University of Aden, Yemen. The purpose of study is to investigate of the inside temperature to arrive comfortable condition of the Mechanical Workshop Building under the present ventilation system. The measurements were recorded within duration of one year, starting from October 2021 to September 2022 on the middle of months. The measured values were then compared to the corresponding limit as specified in the ASHRAE Standard-55. It was found that the inside temperature at the selected locations of the mechanical workshop building exceed the respective upper limits as recommended in the ASHRAE Standard-55. This shows that the existing air ventilation method via the use of natural ventilation and electrical fans in the mechanical workshop building are not able to provide an adequate level of thermal comfort to the occupants for all the stipulated months. Therefore, an alternative ventilation method is needed to improve the thermal comfort inside the Mechanical Workshop building.

Keywords: Mechanical Workshop Building, Natural Ventilation, Electrical Fan, Inside Temperature, Thermal Comfort, Hot and Humid Climate.

التحقق من درجة الحرارة الداخلية للوصول إلى حاله مريحة: دراسة حالة مبنى الورشة الميكانيكية

الملخص:

تُعد الورش الميكانيكية من المباني المهمة في كليات الهندسة. كونها مكان للطلاب والأساتذة لإجراء أنشطة أبحاثهم وتجاربهم العلمية. تُعد الراحة الحرارية مطلبًا أساسيًا في الورش الميكانيكية، لتأثيرها على الإنتاجية والصحة والرضا الحراري للأفراد. وكذلك التهوية الطبيعية استراتيجية مهمة ومستدامة في تصميمات المباني، فهي توفر للأفراد راحة حرارية داخلية جيدة، وتقلل من تكاليف الطاقة. تستخدم معظم مباني الورش الميكانيكية في البلدان ذات المناخ الحار والرطب مزيجًا من التهوية الطبيعية والمراوح الكهربائية التي تستخدم بشكل شائع كوسيلة لتبريد المباني لتوفير الراحة الحرارية للأفراد. يعرض هذا المقال نتائج دراسة قياس ميدانية أجريت على مبنى الورشة الميكانيكية الواقع في كلية الهندسة، جامعة عدن، اليمن. الغرض من هذه الدراسة تقييم مستوى الراحة الحرارية داخل مبنى الورشة الميكانيكية عن طريق قياس درجة حرارة الهواء في نظام التهوية الحالي. وقد تم تسجيل القياسات خلال عام كامل ابتداء من شهر أكتوبر 2021م إلى شهر سبتمبر عام 2022م. ثم تمت مقارنة القيم المقیسة بالحد المقابل كما هو محدد في معيار **ASHRAE Standard -55** ووجد أن درجة حرارة الهواء في المواقع المختارة داخل مبنى الورشة الميكانيكية تتجاوز الحدود العليا الخاصة بها على النحو الموصى به في **ASHRAE Standard-55** هذا يدل على أن طريقة التهوية الحالية من خلال استخدام التهوية الطبيعية والمراوح الكهربائية غير قادرة على توفير مستوى مناسب من الراحة الحرارية للأفراد خلال الأشهر المحددة لذلك، وهناك حاجة إلى طريقة تهوية بديلة لتحسين الراحة الحرارية داخل مبنى الورشة الميكانيكية.

الكلمات المفتاحية: مبنى الورشة الميكانيكية، التهوية الطبيعية، المروحة الكهربائية، درجة الحرارة الداخلية، الراحة الحرارية، المناخ الحار والرطب

الكلمات المفتاحية: مبنى الورشة الميكانيكية، التهوية الطبيعية، المروحة الكهربائية، درجة الحرارة الداخلية، الراحة الحرارية، المناخ الحار والرطب

1.0 INTRODUCTION

There is a close relation between the thermal comfort and the energy consumption in buildings. Occupants' demand for higher thermal comfort has increased the number of heating and air-conditioning systems installed in buildings. Buildings account for about 40% of the global energy consumption and contribute over 30% of the CO₂ emissions [1, 2]. A considerable amount of this energy is consumed in buildings via heating, cooling and dehumidifying to provide thermal comfort. This increasing in energy consumption is worsening in regions with harsh climatic conditions and poses a major challenge in countries having a shortage of electricity such as Yemen. Natural ventilation, which may provide occupants with good indoor thermal comfort, and reduce energy consumption, has become an important sustainable strategy in building designs [3].

The large space halls also known as high span spaces have been constructed in many places worldwide, including Yemen. They are also known as enclosed ventilated air spaces which contain various contaminant and heat sources [4]. Large space constructions such as workshop building, industrial buildings, aircraft hangars, sports halls, mosques, and stadiums are distinguished from other space constructions in terms of their energy consumption [5]. These spaces advance issues that are related to indoor air quality and thermal comfort [6],[7],[8],[9]. A mechanical workshop building is considered as one type of a large space building in faculty of engineering. It is a place of great importance for the students and teachers to perform their practical activities such as welding, product the metal from furnaces test and heat treatment of material...etc. Thermal comfort inside the

Mechanical Workshops building is therefore an important requirement because it affects the productivity, health and thermal satisfaction of the occupants [10]. The thermal comfort and indoor air quality in mechanical workshops building have not been widely studied [11],[12],[13]. There is a lack of in-depth study and analysis of thermal comfort and indoor air quality inside Mechanical Workshops building. Hence, there is a need to conduct such studies for the benefit of the occupants.

Thermal comfort is an essential requirement in most occupied spaces. According to ASHRAE Standard thermal comfort can be defined as “that condition of mind which expresses satisfaction with the thermal environment”. Thermal comfort is determined by evaluating six parameters [14]. Four of the parameters are related to the environment while the other two are related to the human. The environmental parameters are relative humidity (RH), air temperature, (T_a), air velocity (V_a) and mean radiant temperature (T_{mrt}). while the human parameters are clothing and activity levels. According to Markus [15], air temperature is the most important parameter that affects the indoor thermal environment. In this study the evaluation of the thermal comfort inside the mechanical workshop building was performed by measuring the air temperature.

This article presents findings from a field measurement conducted on mechanical workshop building located in Faculty of engineering, university of Aden, Yemen. The study goal is to evaluate the thermal comfort inside the mechanical workshop by measuring the inside temperature. The measurements were recorded within duration of one year, starting from October 2021 to September 2022 on the middle of months. The measured values were then compared to the corresponding limit as specified in the ASHRAE Standard-55.

2.0 FIELD MEASUREMENTS

The mechanical workshop building was selected as a case of study for this research. The photo of the mechanical workshop building is shown in **Figure (1a)**. It is one of the largest typical mechanical workshops building in faculty of engineering, university of Aden. It was built in the year 2007 and constructed based on

rectangular shape with length, $L = 13$ m, width, $W = 10$ m and height, $H = 6$ m. The total built-up area of the hall building is 130 m^2 . The hall building of mechanical workshop can be occupied by about 35 people. The walls of mechanical workshop building are built with three doors and eight windows. The mechanical workshop does not use air conditioning system. It rather uses natural ventilation for cooling purposes. The natural ventilation in the mechanical workshop is supported by 9 units of ceiling electrical fans as can be seen in **Figure (1b)**.

The purpose of the field measurement is to obtain the values of parameters which influence the level of thermal comfort inside the workshop building. In this study the evaluation of the thermal comfort inside the workshop building was performed by measuring the inside temperature, which is the most important factor that affects the indoor thermal environment [15].



Figure 1: (a) A photo of the mechanical workshop building; (b) Internal view of the mechanical workshop building.

The inside temperature was acquired at five chosen locations inside the building. These locations were indicated by points P1 to P5 as shown in **Figure (2a)**. The inside temperature at these points was measured at the (1.1 m) height from the ground level. It is decided to be 1.1m because of consideration of human activities like sitting and standing [16, 17]. The measurements were recorded within duration of one year, starting from October 2021 to September 2022 on the middle of months. The data were conducted from 08:00 AM to 16:00 PM with a 30- minutes interval.

Thermocouple Thermometers instruments is used for the measuring inside temperature with accuracy $\pm (0.4\% + 0.5^{\circ}\text{C})$ are shown in **Figure (2b)**.

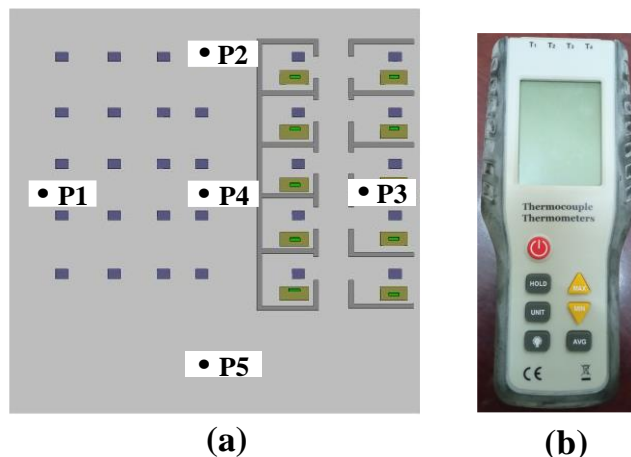


Figure 2: (a) Locations of measuring inside temperature points (P1 to P5) of the Mechanical Workshop, and (b) Thermocouple Thermometers Instruments used for the field measurement.

3.0 RESULTS AND DISCUSSION

Figure (3) shows the inside temperature distribution varies for all month throughout the year from October 2021 to September 2022. It is observed that, higher inside temperature was recorded in the months of May, June and July ranging from 32.4°C to 36.3°C . The inside temperature in the months of October, November, March, April, August and September was moderate and was ranging from 30.0°C to 33.5°C . The lower inside temperature was recorded in December, January and February ranging from 28.3°C to 31.3°C . It can also be observed that the higher inside temperature occurs for all month in the south part of the mechanical workshop (location P3). The inside temperature at the east, middle and west part (locations P2, P4 and P5) was moderate, while the temperature in the north part of the mechanical workshop hall (location P1) is the lowest. It can also be observed that the patterns of

inside temperature distribution for all months are the same. June month was chosen to be discussed in details because it has the highest inside temperature ranging from 32.6°C to 36.3°C.

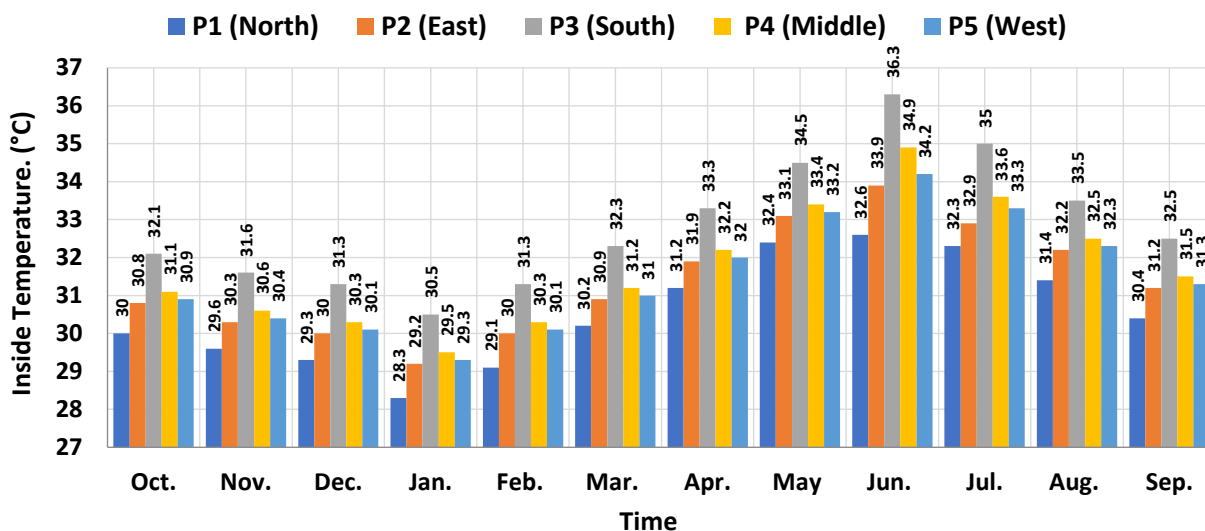


Figure 3: Inside temperature at various locations in the Mechanical Workshop Building from October 2021 to September 2022.

Figure (4) shows the variation of the inside temperature at five selected locations of the mechanical workshop hall from 8:00 a.m. to 6:00 pm in the June month. It can be seen that the inside temperature for at all locations has similar trends, in which increasing and experienced decreasing in the similar period. The temperature follows an ascending order steadily from 8.00 am to 1.00 pm. This is because the inside temperature inside the workshop hall rose gradually due to the solar radiation that is transmitted into the mechanical workshop hall through the

roof and vertical wall. However, the inside temperature follows the descending trend after 1.00 pm. This is because of less heat was being transferred to the air inside the mechanical workshop hall due to the reduction in solar radiation intensity as the time elapses. At any given time, the inside temperature in the south region of the mechanical workshop hall (location P3) is the highest while the inside temperature in the other areas (locations P1, P2, P4 and P5) is the lowest. This is because the peoples and welding operations that occupy the mechanical workshop hall release heat from their body to the surrounding air. The highest inside temperature at 1.40 p.m. was about 36.3°C, at location P3, while the lowest inside temperature at this time was 32.6°C, at location P1. This indicates that the inside temperature value in all points inside the mechanical workshop building varies means that the thermal comfort level is not equally distributed. An addition the condition inside the mechanical workshop hall is not quite thermally comfortable to the occupants.

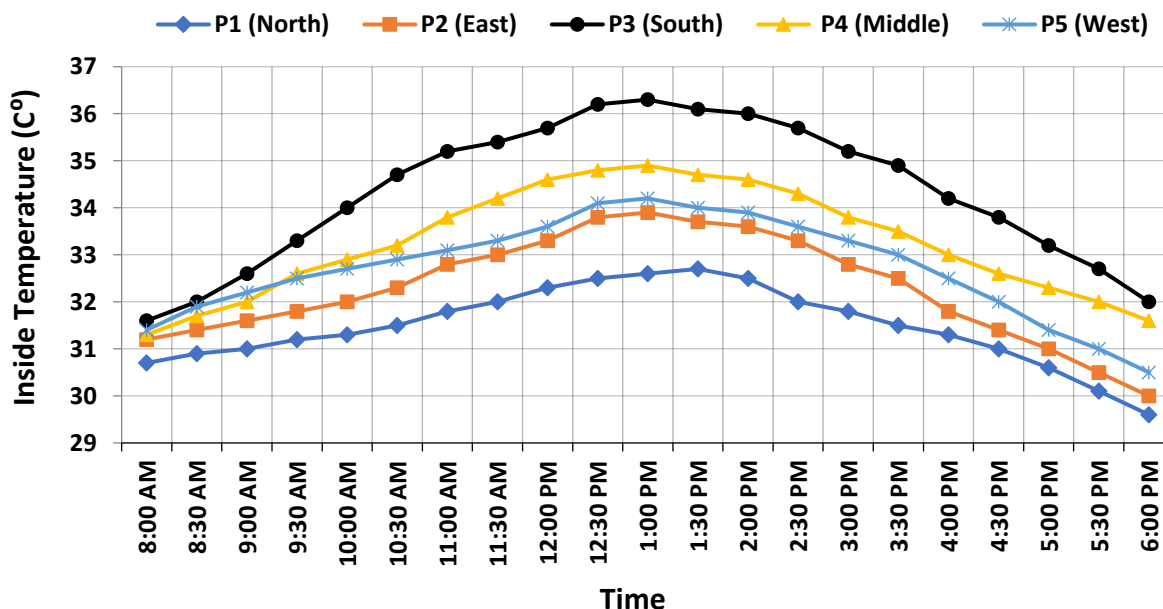


Figure 4: Hourly variation of inside temperature at all data collection locations for June, 2022.

The method executed to assess the level of thermal comfort inside the mechanical workshop building was by comparing the measured inside temperature with the corresponding ranges stipulated in the ASHRAE Standard-55 those in the literatures. **Table 1** shows a comparison between the measured values of inside temperature of the workshop building for all the months, under the present ventilation condition, with the corresponding ranges and stipulated in the ASHRAE Standard-55 [18] and those in the literatures. It can be observed that for all the months, the measured inside temperature of the workshop building is higher and ranging from 28.3°C to 36.3°C which exceeded the acceptable thermal comfort range that is listed in Table 2. This is, on average, about 35% higher than the range of inside temperature recommended in the ASHRAE Standard-55 [18]. This indicates that the condition inside the mechanical workshop building is not quite thermally comfortable to the occupants. This also suggests that the existing air ventilation system is not capable of providing the adequate thermal comfort inside the mechanical workshop building. Statistical Year-Book (2003) suggest that, to achieve the thermal comfort range in a hot humid climate, the inside temperature should be between 25°C and 28°C [19]

Table 1: The comparison of the thermal comfort parameter by various standards with the previous studies

Parameter	Measured inside temperature (°C) in the Mechanical Workshop Building from October 2021 to September 2022												Acceptable range	
													Standards	Literature Review
Inside Temperature (°C)	Oct	Nov	Dec	Jan	Feb	Mar	Apr	May	Jun	Jul	Aug	Sep	ASHRAE Standard [18]	Yemen [19]
	30.0	29.6	29.3	28.3	29.1	30.2	31.2	32.4	32.6	32.3	31.4	30.4	23	25
	-	-	-	-	-	-	-	-	-	-	-	-	-	-
	32.1	31.6	31.5	30.5	31.3	32.3	33.3	34.5	36.3	35.0	33.5	32.5	26	28

4.0 CONCLUSION

This study presents the results of a field measurement aimed to investigate of the inside temperature to arrive comfortable condition of the Mechanical Workshop Building located in Faculty of engineering, university of Aden, Yemen. The results show that, the measured inside temperature of the workshop building is well outside the recommended limits specified by ASHRAE standard. This shows that the existing methods via the use of natural ventilation and electrical fans in the mechanical workshop building are not able to provide an adequate level of thermal comfort to the occupants for all the stipulated months. Therefore, an alternative method is needed to improve the thermal comfort inside the Mechanical Workshop building.

Acknowledgement

The author would like to acknowledge the support from the Faculty of Engineering, University of Aden. The author also is grateful to the staff of the Mechanical Workshop lab in granting permission to use the Mechanical Workshop building as a case study.

References

1. Yang, L., H. Yan, and J.C. Lam, *Thermal comfort and building energy consumption implications—a review*. Applied energy, 2014. **115**: p. 164-173.
2. Alghamdi, S., et al., *Effect of Architectural Building Design Parameters on Thermal Comfort and Energy Consumption in Higher Education Buildings*. Buildings, 2022. **12**(3): p. 329.
3. He, Y., et al., *How green building rating systems affect indoor thermal comfort environments design*. Building and Environment, 2022. **224**: p. 109514.
4. Ghaleb, F., Kamar, Haslinda Mohamed, N. Kamsah, and M.I. Alhamid, *Enhancement of thermal comfort in a large space building*. Alexandria Engineering Journal, 2019. **58**(1): p. 49-65.
5. Kamar, H.M., et al., *Enhancement of thermal comfort in a large space building*. Alexandria Engineering Journal, 2019. **58**(1): p. 49-65.
6. Heiselberg, P., S. Murakami, and C.-A. Roulet, *Ventilation of large spaces in buildings*. Final Report IEA Annex, 1998. **26**.
7. Al-Homoud, M.S., A.A. Abdou, and I.M. Budaiwi, *Assessment of monitored energy use and thermal comfort conditions in mosques in hot-humid climates*. Energy and Buildings, 2009. **41**(6): p. 607-614.
8. Rajagopalan, P. and M.B. Luther, *Thermal and ventilation performance of a naturally ventilated sports hall within an aquatic centre*. Energy and buildings, 2013. **58**: p. 111-122.
9. Chen, Q., *Ventilation performance prediction for buildings: A method overview and recent applications*. Building and environment, 2009. **44**(4): p. 848-858.
10. Jia, L.-R., et al., *Interaction between thermal comfort, indoor air quality and ventilation energy consumption of educational buildings: A comprehensive review*. Buildings, 2021. **11**(12): p. 591.
11. Bakhlah, M.S. and A.S. Hassan, *The study of air temperature when the sun path direction to Ka'abah: with a case study of Al-Malik Khalid Mosque*,

- Malaysia*. International Transaction Journal of Engineering, Management & Applied Sciences & Technologies, 2012. **3**(2): p. 185-202.
12. Saeed, S., *Thermal comfort requirements in hot dry regions with special reference to Riyadh part 2: for Friday prayer*. International journal of ambient energy, 1996. **17**(1): p. 17-21.
 13. Ibrahim, S., et al., *Assessment of thermal comfort in the mosque in Sarawak, Malaysia*. International Journal of Energy and Environment, 2014. **5**(3): p. 327-334.
 14. Mamani, T., et al., *Variables that affect thermal comfort and its measuring instruments: A systematic review*. Sustainability, 2022. **14**(3): p. 1773.
 15. Markus, T.A. and E.N. Morris, *Buildings, climate, and energy*. 1980: Pitman Pub.
 16. Standard, A., *Standard 55–2017 thermal environmental conditions for human occupancy*. Ashrae: Atlanta, GA, USA, 2017.
 17. Hussin, A., et al. *Thermal comfort during daily prayer times in an air-conditioned mosque in Malaysia*. in *Proceedings of 8th Windsor Conference: Counting the Cost of Comfort in a Changing World*, April. 2014.
 18. Ličina, V.F., et al., *Development of the ASHRAE global thermal comfort database II*. Building and Environment, 2018. **142**: p. 502-512.
 19. BINTHABET, M.M.A., *Thermal behavior in the traditional courtyard houses of yemen*. 2007, Ph. D. Dissertation of Universiti Sains Malaysia, Penang.



STARDOM UNIVERSITY

**Stardom Scientific Journal of
Natural and Engineering Sciences**



— **STARDOM SCIENTIFIC JOURNAL OF NATURAL AND ENGINEERING SCIENCES** —
PUBLISHED TWICE A YEAR BY STARDOM UNIVERSITY
Volume 2 - 1st issue 2024
International deposit number : ISSN 2980-3756